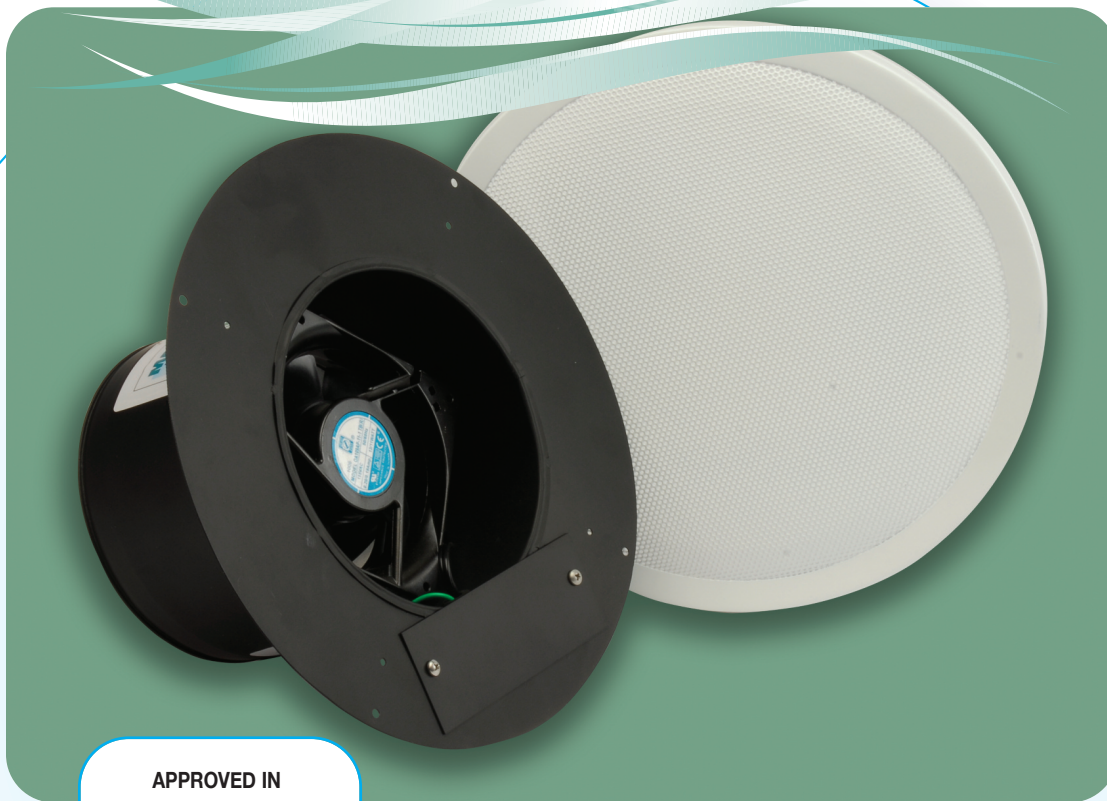


Tamarack Technologies Direct Replacement
Ventilation System for Manufactured Housing

Mainstream



APPROVED IN
WEATHERIZATION
PROGRAMS
NATION WIDE



MAINSTREAM

- Draft Proof Metal Damper
- Continuous Operation
- Rated Motor (60,000 Hours)
- ASHRAE Compliant
- Energy Efficient - 16 Watts
- Easy to Install
- Economical
- 65 CFM
- Made in USA
- ETL Listed

LIKE US ON
FACEBOOK



FOLLOW US
ON TWITTER



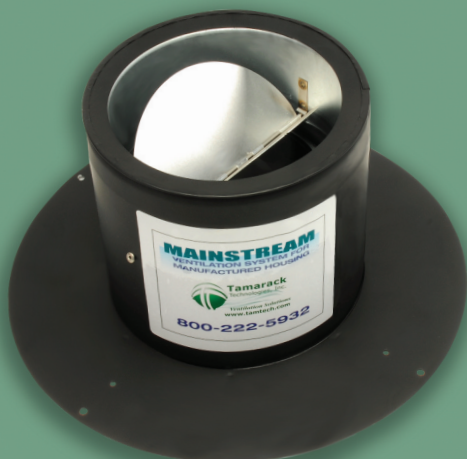
Tamarack
Technologies, Inc.

Ventilation Solutions
www.tamtech.com

800-222-5932

Mainstream

Tamarack Technologies Direct
Replacement Ventilation System for
Manufactured Housing



Mainstream with Airetrak 1A Advantage® allows the programming of the bathroom fan to run every hour, on the hour at a set speed and time within that hour (you decide). With the touch of a button a 20 or 40 minute full power override is activated. At the end of the override the fan will return to its programmed duty cycle.



SPECIFICATIONS

| | |
|-------------|---|
| Electrical: | |
| Voltage | 120 VAC 60Hz |
| Power | 16 Watts/.22Amps |
| Efficiency | 3.89 CFM per Watt |
| Air Flow | 65 CFM @ 0.1" |
| Weight | Fan: 4 Lbs. |
| Sound Level | Approximately 3 sones |
| Grille | Dimensions: 12" Round Duct: 7" Color: White |

This fan was tested in accordance with figure #12 of ANSI/AMCA Standard 210-07, ANSI/ASHRAE Standard 51-07, AMCA 300-08 and HVI Standard 915/916.

**Tamarack**
Technologies, Inc.
Ventilation Solutions
www.tamtech.com
800-222-5932